










XPass 2

Outdoor Compact RFID Device



XPass 2 is an outdoor compact RFID device based on Suprema's state-of-the-art RFID technology and multi-hardware platform. With the multi-form factor technology, mullion-type, gangbox-type, and gangbox keypad-type are all supported which provides perfect installation in various environments. XPass 2 also supports dual-frequency (125kHz / 13.56MHz) RFID technology and can read the mobile cards using NFC and BLE, the latest mobile communication technologies. Packed in a rugged IP65/IP67 rated dust & waterproof performance as well as IK08 rated vandal-proof structure, suitable for tough environment and outdoor installation.

Features

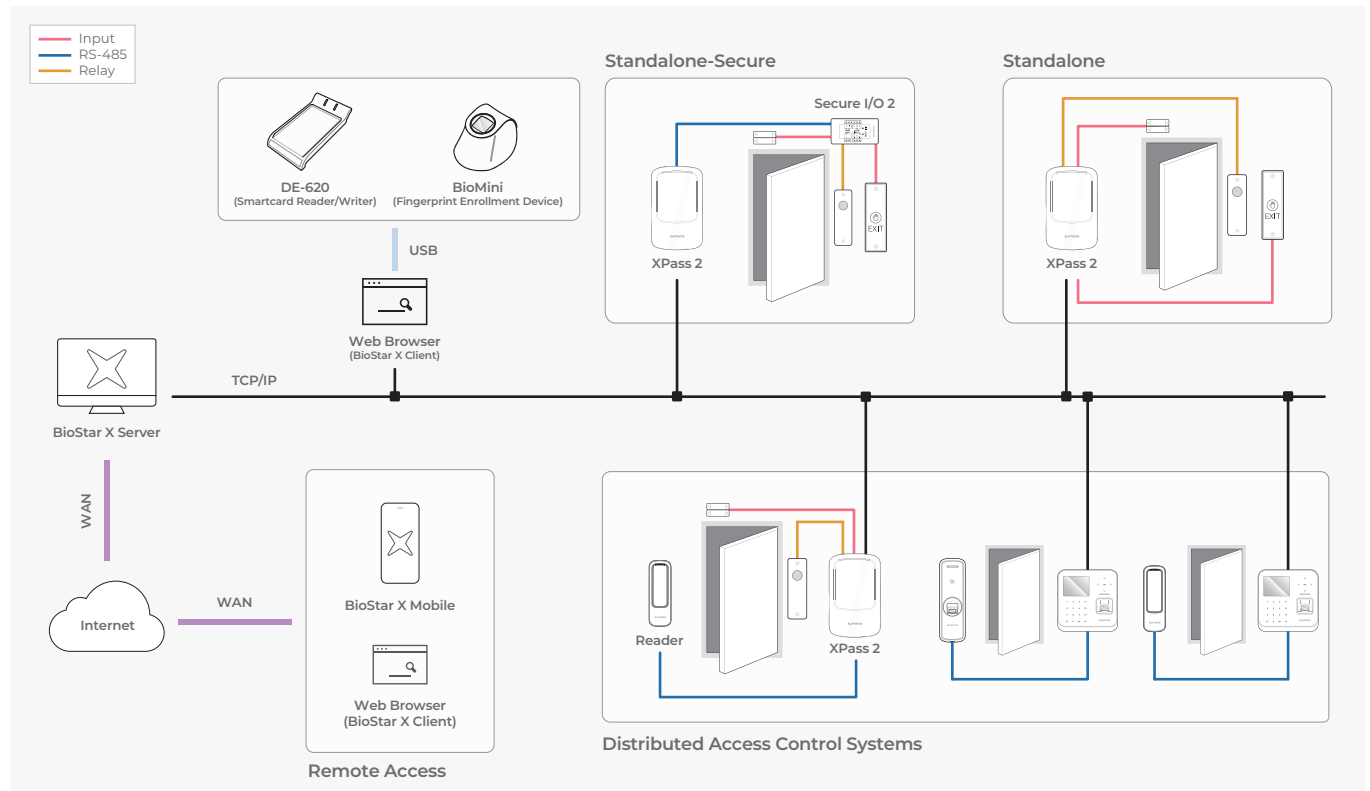
-  **Mobile Access**
-  **Industry standard communication via OSDP**
-  **Multi-type hardware structure**
-  **Enhanced security with the Secure Element**
-  **IP67 - Water and Dust Resistant**
-  **IK08 - Vandal Resistant**
-  **Multi-card Reading**
-  **Power over Ethernet**
-  **Homing bump on keypad for the visually impaired**

Specifications

Model Name	XP2-MDPB	XP2-GDPB	XP2-GKDPB	XP2-MAPB
RF Option	125kHz EM & 13.56MHz MIFARE, MIFARE Plus, DESFire, DESFire EV1/EV2/EV3 ¹ , FeliCa			125kHz EM, HID Prox & 13.56 MHz MIFARE, MIFARE Plus, DESFire, DESFire EV1/EV2/EV3 ¹ , FeliCa, iCLASS SE/SR/Seos
CPU	1 GHz			
Memory	4GB Flash + 64MB RAM			
Max. Users	200,000			
Max. Text Logs	1,000,000			
Mobile card	NFC, BLE			
Ingress Protection	IP65, IP67			
Vandal Proof	IK08			
Installation type	Mullion	Gangbox		Mullion
PIN	-	-	Supported (Keypad 3x4)	-
Ethernet	Supported (10/100 Mbps, auto MDI/MDI-X)			
RS-485	1ch Host or Slave (Selectable)			
RS-485 Communication Protocol	OSDP V2 compliant			
Wiegand	1ch In or Out			
TTL Input	2ch Input			
Relay	1 Relay			
PoE	Supported (IEEE 802.3af compliant)			
Sound	Multi-tone buzzer			
Operating Temperature	-35 °C ~ 65 °C (-31°F ~ 149°F)			
Operating Humidity	0% ~ 95%, non-condensing			
Power	DC 12V 0.5A, DC 24V 0.3A			
Dimensions (WxHxD, mm)	48 x 144.7 x 27	80 x 130 x 25		48 x 144.7 x 27
Certificates	UKCA, KC, FCC, IC, RCM, BIS, SIG, RoHS, REACH, WEEE, ETL Listed to UL 294	UKCA, KC, FCC, IC, RCM, BIS, SIG, TELEC, RoHS, REACH, WEEE, ETL Listed to UL 294		UKCA, KC, FCC, RCM, SIG, RoHS, REACH, WEEE

¹ DESFire EV2/EV3 cards are supported by having backward compatibility of DESFire EV1 cards. CSN and smart card functions are compatible with XPass 2.

System Configurations



Suprema Inc.

17F Parkview Tower, 248, Jeongjail-ro, Bundang-gu, Seongnam-si, Gyeonggi-do, 13554, Republic of Korea
T +82 31 783 4502 **W** www.supremainc.com



For more information visit our website below by scanning the QR code.
<https://www.supremainc.com/en/about/contact-us.asp>